

IN THE DRIVER'S SEAT.

Orange County's Toll Roads

Welcome to The Toll Roads' ongoing series to help you learn more about the fastest, easiest and most predictable way to get to and through Orange County.

Buckle up and let's take a ride.



DRIVE AND PAY YOUR WAY

We made sure that every driver could easily use The Toll Roads, including **visitors** and **first-time users**:

3 EASY WAYS TO PAY



FasTrak®

Pay with a transponder. Drivers choosing this option enjoy lower tolls (\$1 less per toll point) and can use the transponder on toll roads, lanes and bridges throughout the state. Drivers are issued a transponder and pay tolls automatically from a pre-established account that can be prepaid and replenished using credit card, cash or check.



ExpressAccount®

No transponder is required for drivers who choose this option for use only on the 73, 133, 241 and 261 Toll Roads. A photo of your car's license plate is scanned and connected to the account you set up.



Online Payment

This is an ideal option for one-time users. Simply go to **TheTollRoads.com** within five days of using the 73, 133, 241 or 261 Toll Roads and enter your license plate number and pay. We also offer a mobile app for payment. There are no invoices, prepayments, statements or transponders.

FIRST CLASS COMMUTE

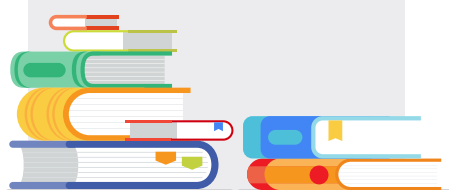
Summer break is over and school is back in session. Parents of young kids are working morning drop-off into their routine; newly licensed teenagers are figuring out which lot to park in and college students are organizing carpools. Meanwhile professors, principals, teachers and other school employees are settling in to their daily commute too. The **73, 133, 241 and 261 Toll Roads** make it easier, safer and faster to get to and from class at schools throughout Orange County.

Making the Grade

Approximately **85.5 percent** of Orange County adults have a high school education, with **39 percent** holding a bachelor's degree or higher, according to recent United States Census Bureau estimates.

In a recent study by **Niche.com**, **10 Orange County school districts rank among the top 100 districts in California.**

Money Magazine has ranked **UCI No. 3** on its 2018 list of the best colleges and universities in the U.S.



SAVED BY THE BELL



Many of OC's high schools are located near one of The Toll Roads. While public schools serve their neighborhoods, private school students often travel from near and far. Santa Margarita Catholic High School's 1,700 students live in 66 zip codes across the region, while Sage Hill School's 540 students come from over 140 different private and public middle schools and nearly 50 different communities. "The Toll Roads are instrumental to our bus program allowing Santa Margarita Catholic High School to provide transportation for students across the county," says Amanda Coronado, the school's communications director, noting that the school's bus routes include the **73, 133, 241 and 261 Toll Roads** to and from campus.

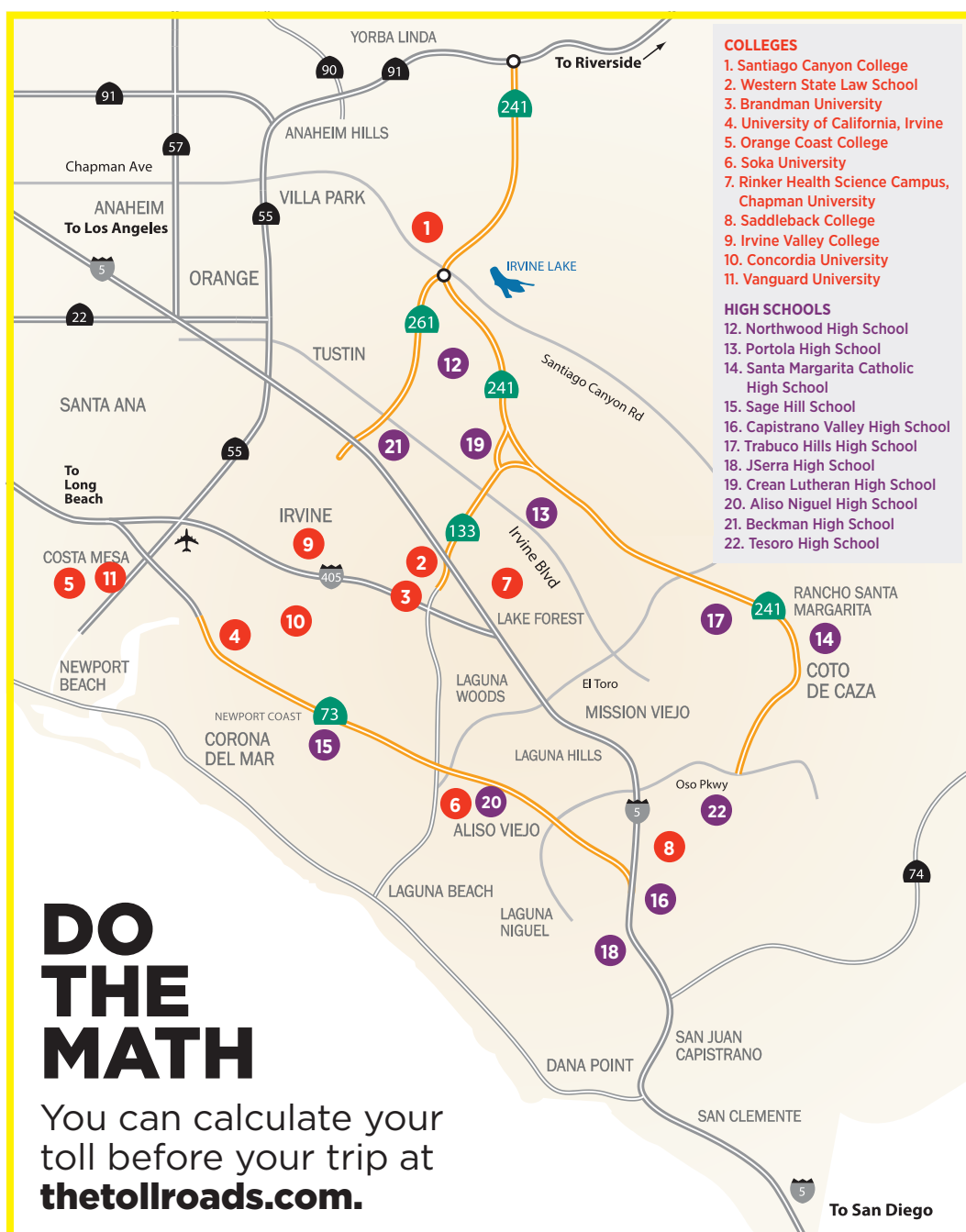


TALENT POOL

UCI students and staff who live as far as **Carlsbad, Corona** and **Temecula** cut their commute time to **UCI** by driving on The Toll Roads, many of them via one of the **university's 21 vanpools**. "Most of the people who come to UCI via vanpools come from more than 30 miles away," says Saul Valdez, the program coordinator. "Vans that come from **San Diego County** and **San Clemente** take the **73 Toll Road**. The vans traveling from the **Inland Empire** save 35 minutes or more by taking the **241 Toll Road**."

Geography Lesson

The Toll Roads are a great way to travel to schools throughout Orange County



DO THE MATH

You can calculate your toll before your trip at **thetollroads.com**.

A+ FOR ACCESS

Capistrano Unified School District's School of Choice program requires mobility in South Orange County. **The Toll Roads** help students get to their school of choice on time and ready to learn.



DID YOU KNOW

The average pencil holds enough graphite to draw a line about **35 miles long**. That's just a little bit less than the length of the **133 and 241 Toll Roads** combined.



UCI is a Cool School

UC Irvine is one of the greenest universities in the U.S. according to *Sierra* magazine, which has ranked UCI in the top 10 of its "**Cool School**" list for the past decade. Eco-friendly transportation programs, including a hydrogen-fueled bus and the first all-electric bus and shuttle fleet in the nation, are reasons why. Before boarding those campus buses, UCI's **30,000 students** and **16,000 employees** have to get to the school in the first place. Luckily, the **73 Toll Road** offers direct access to the campus via Bison Ave. One example: the daily bus from the Irvine campus to the UCI Medical School in Orange runs all day long, starting and ending each loop via the 73 Toll Road.

The Toll Roads
of Orange County

